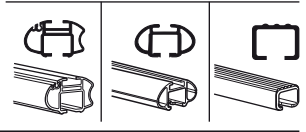
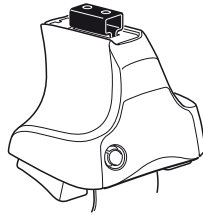


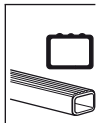
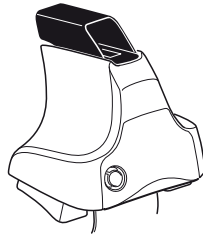
Kit 1081

MITSUBISHI Carisma, 4-dr Sedan, 97-04
MITSUBISHI Carisma, 5-dr Hatchback, 96-04

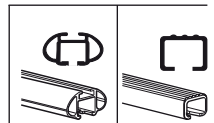
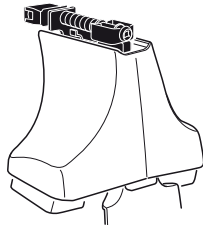
480R
754



480



750



Max. 50kg
Max. 110 lbs

Kit XXXX
 instructions

x1

x4

x4

x4
 x4

480R/754

x1

x4

x4

x4

480

x1

x4

x4

750

x2 x2 x2 x4	x2	x2 x2 x4 x4	x2 x2	x2

← **194** x2

← **195** x2

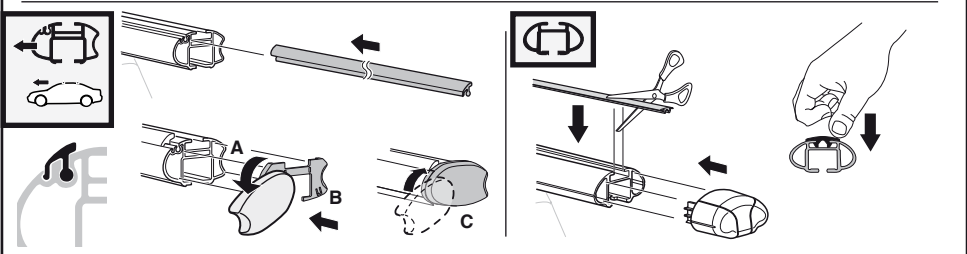
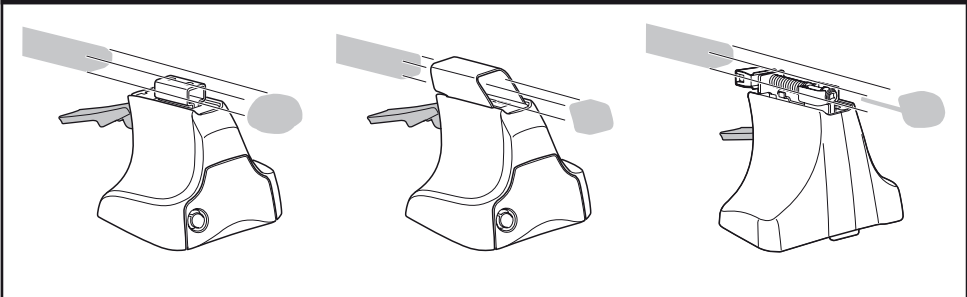
← **204** x2

← **11** x2

← **12** x2

x1

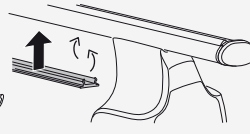
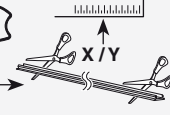
Kit



3



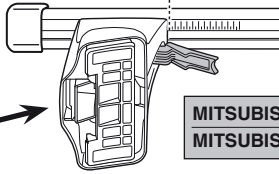
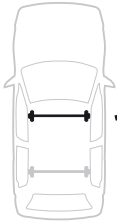
754



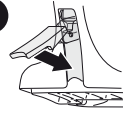
750



1

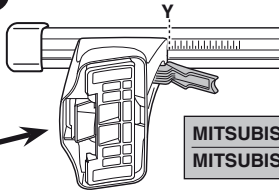


2

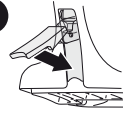


	X
MITSUBISHI Carisma, 4-dr Sedan, 97-04	30,5
MITSUBISHI Carisma, 5-dr Hatchback, 96-04	30,5

1



2



	Y
MITSUBISHI Carisma, 4-dr Sedan, 97-04	24,5
MITSUBISHI Carisma, 5-dr Hatchback, 96-04	26,5

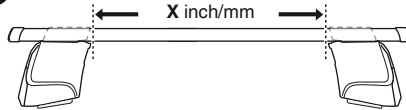


480R

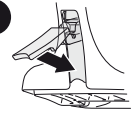


480

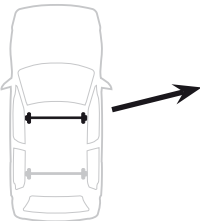
1



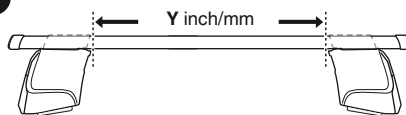
2



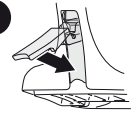
	X inch	X mm
MITSUBISHI Carisma, 4-dr Sedan, 97-04	37 ⁵ / ₈ "	956 mm
MITSUBISHI Carisma, 5-dr Hatchback, 96-04	37 ⁵ / ₈ "	956 mm



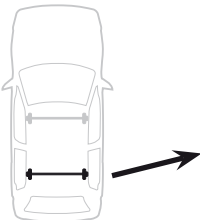
1



2

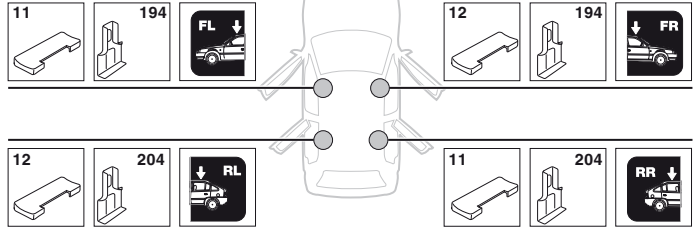


	Y inch	Y mm
MITSUBISHI Carisma, 4-dr Sedan, 97-04	35 ¹ / ₈ "	896 mm
MITSUBISHI Carisma, 5-dr Hatchback, 96-04	36 ¹ / ₈ "	916 mm

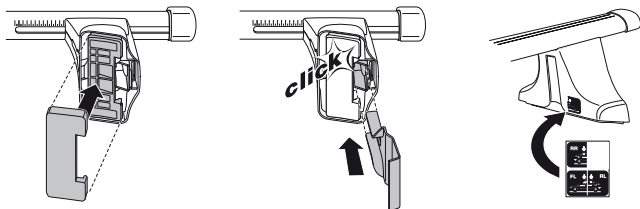
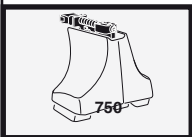
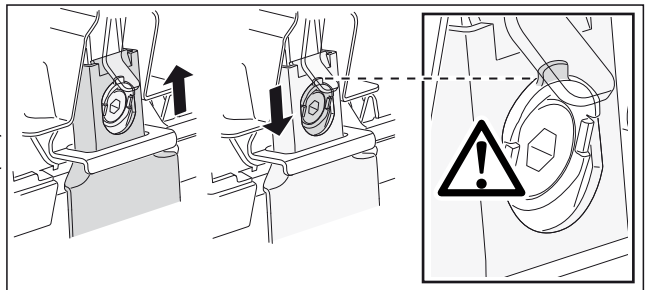
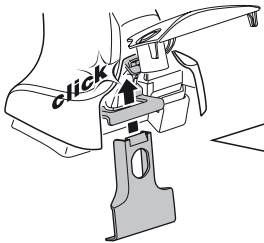
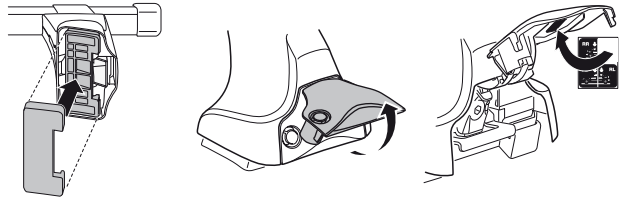
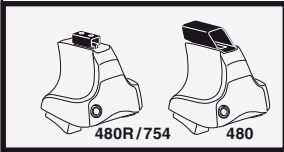
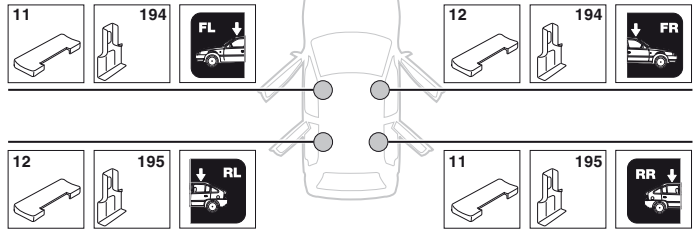


4

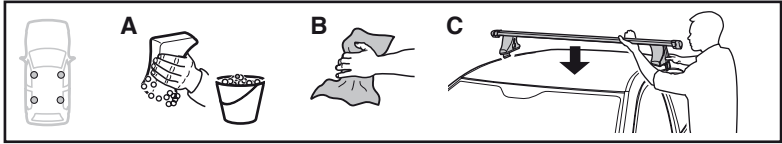
MITSUBISHI Carisma, 4-dr Sedan, 97-04



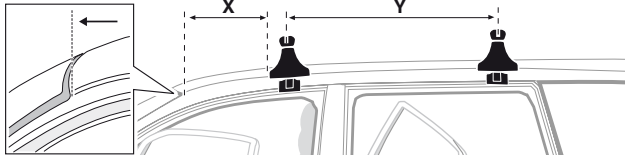
MITSUBISHI Carisma, 5-dr Hatchback, 96-04



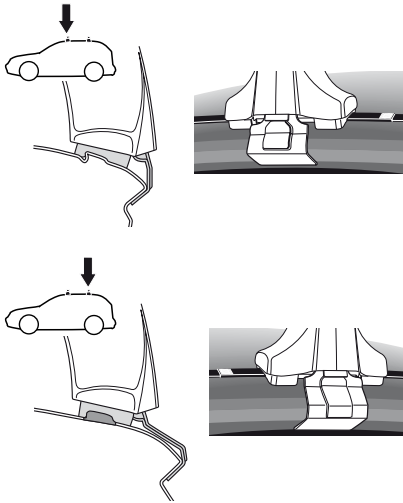
5



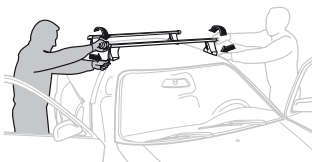
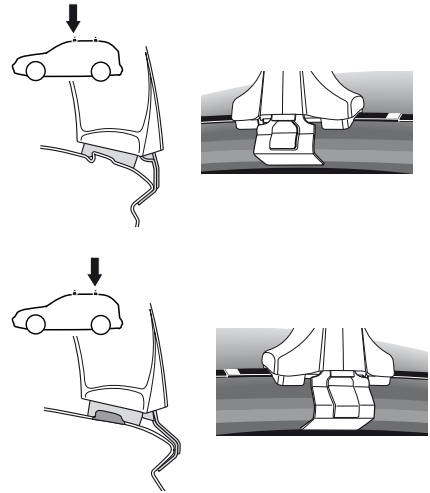
	X mm	Y mm	X inch	Y inch
MITSUBISHI Carisma, 4-dr Sedan, 97-04	220 mm	650 mm	8 5/8"	25 5/8"
MITSUBISHI Carisma, 5-dr Hatchback, 96-04	220 mm	650 mm	8 5/8"	25 5/8"



MITSUBISHI Carisma, 4-dr Sedan, 97-04



MITSUBISHI Carisma, 5-dr Hatchback, 96-04



- GB/US** Tighten alternately
- D** Die Schrauben abwechselnd anziehen
- F** Serrer alternativement chaque côté
- NL** Afwisselend aan de linker- en de rechterkant aandraaien
- I** Alternare il serraggio delle viti
- E** Apretar alternativamente
- PT** Aperte alternadamente
- S** Dra åt växelvis
- FIN** Kierrä vuorotellen
- EST** Pinguldage vaheldumisi
- LAT** Pievelciēt pamišus
- LIT** Užsukinėkite pakaitomis
- PL** Śruby dokręcaj naprzemiennie
- RU** Затягивайте попеременно

- CZ** Pokrétla bagazníka dokręcaj dokręcaj naprzemiennie.
- SK** Doťahujte striedavo
- SLO** Privijajte izmenično.
- HR** Naizmjenično zategnite
- HU** Egymástól függetlenül szorítandó
- GR** Σφιγγετε εναλλάξ
- TR** Dönüşümlü sıkın
- 中文** 交替拧紧
- 한국어** 번갈아 가며 조이십시오.
- 日本語** 交互に締め付けてください。
- ไทย** ชับในแบบสลับ

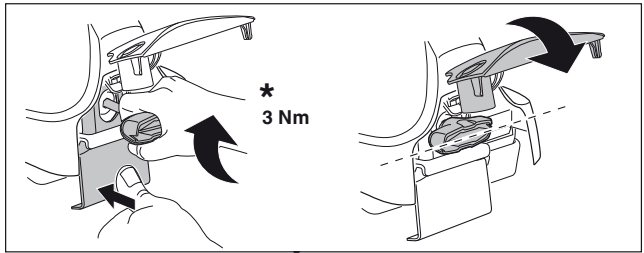
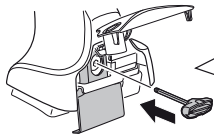
6



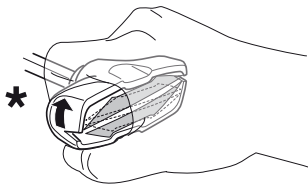
480R/754



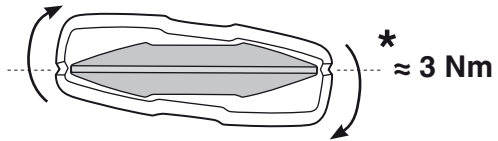
480



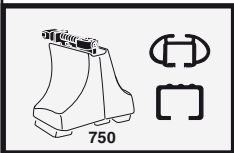
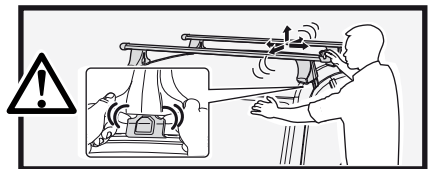
*
3 Nm



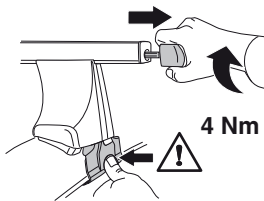
*



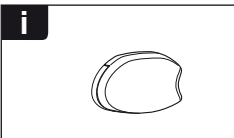
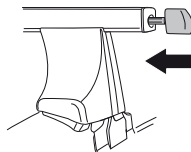
*
≈ 3 Nm



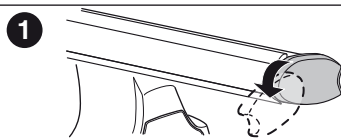
750



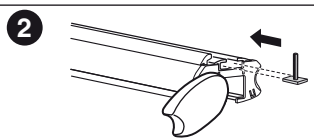
4 Nm



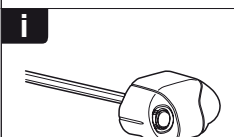
i



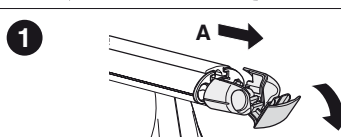
1



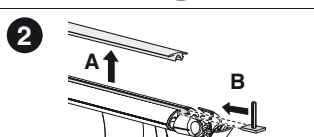
2



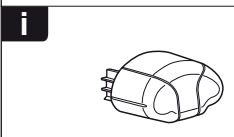
i



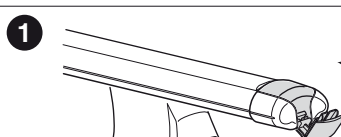
1



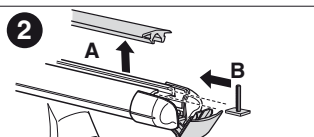
2



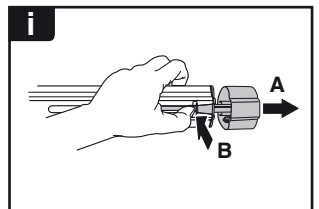
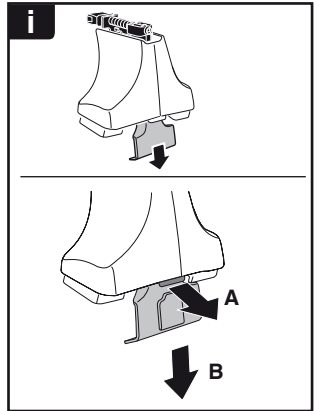
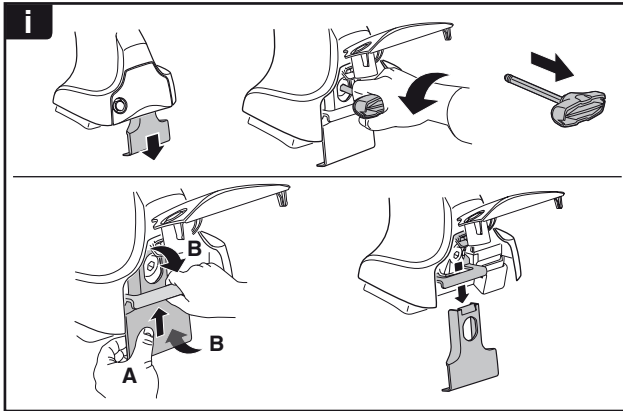
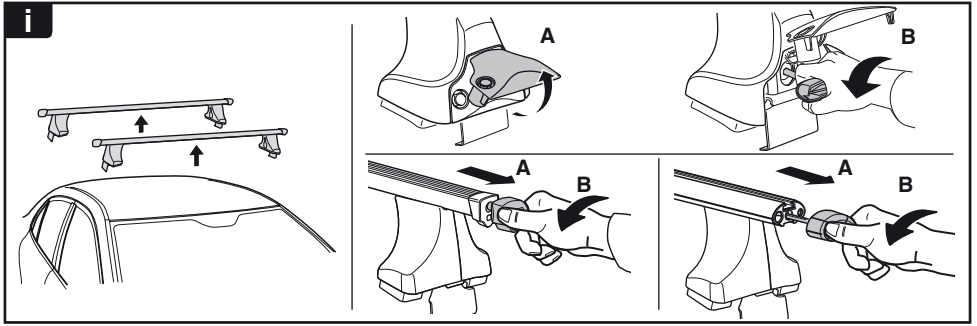
i



1



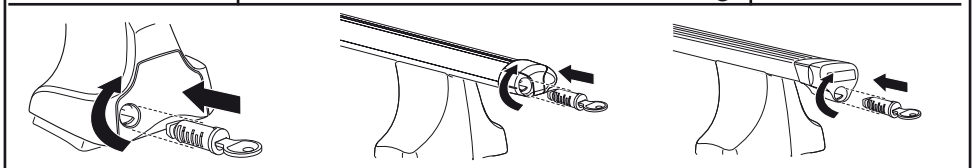
2



THULE
SWEDEN
**ONE
KEY
SYSTEM**



- 544** (x4)
 - 596** (x6)
 - 588** (x8)
 - 510** (x10)
 - 452** (x12)
- NA
EUR
ASIA



WW ▶ Thule Sweden AB, Box 69, 330 33 Hillerstorp, SWEDEN
NA ▶ Thule Inc., 42 Silvermine Road, Seymour, Connecticut 06483, USA

info@thule.com
customer.service@thule.com

www.thule.com